

INCLUDED COMPONENTS

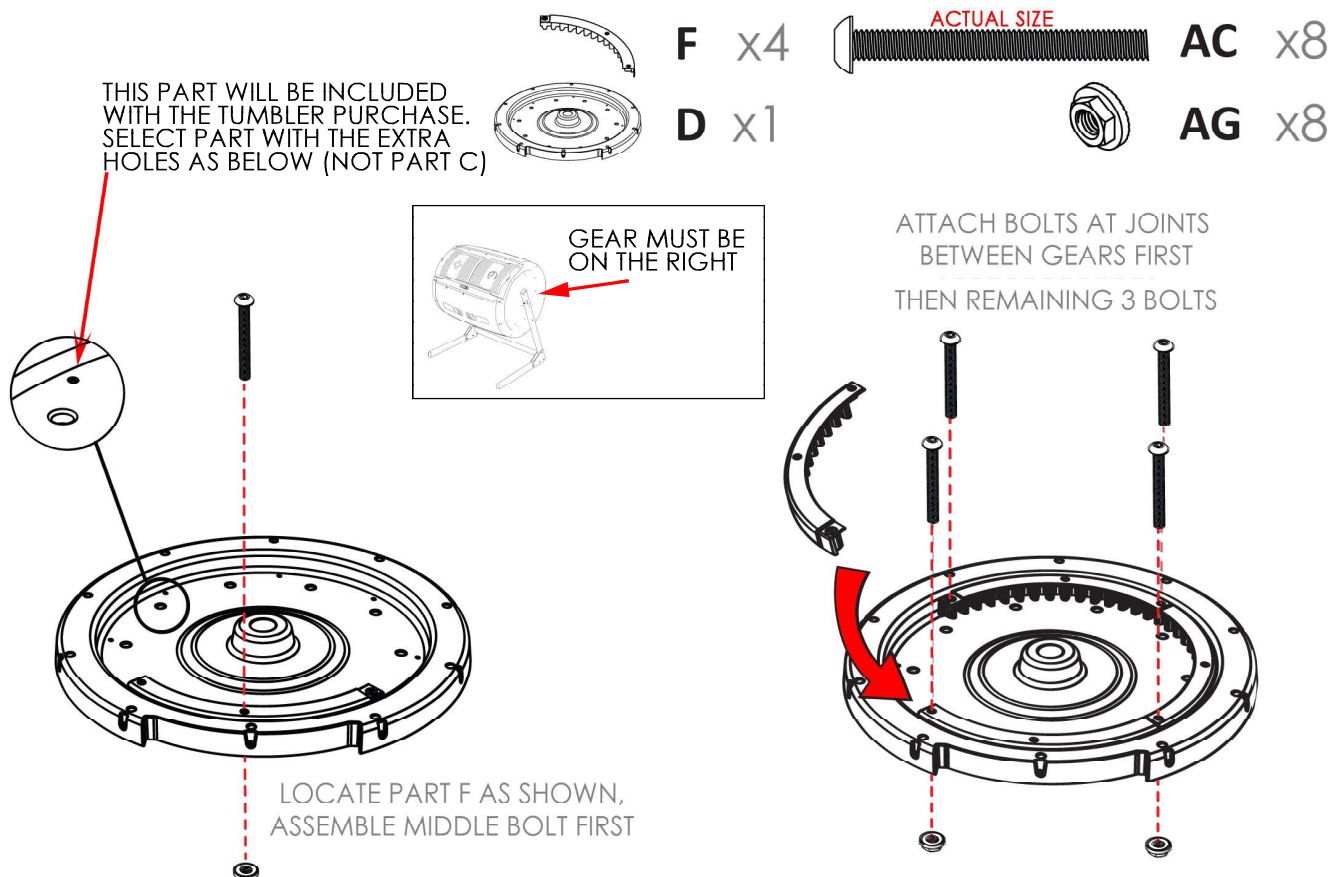
PART	PART NUMBER	QTY	DESCRIPTION
	AC	8	BUTTONHEAD SOCKET SCREW M5x40
	AD	4	BUTTONHEAD SOCKET SCREW M5x55
	AE	2	BUTTONHEAD SOCKET SCREW M5x70
	AF	1	OVERSIZED M5 WASHER
	AG	11 +1 SPARE	SELF CLINCHING NUT M5
	AH	3	NYLOC NUT M5

PART	PART NUMBER	QTY	DESCRIPTION
	AL	1	NYLON SPACER
	F	4	INTERNAL GEAR
	O	1	INNER GEAR COG
	P	1	CRANK COVER
	Q	1	CRANK ARM
	R	1	CRANK HANDLE
	S	1	CRANK RATCHET

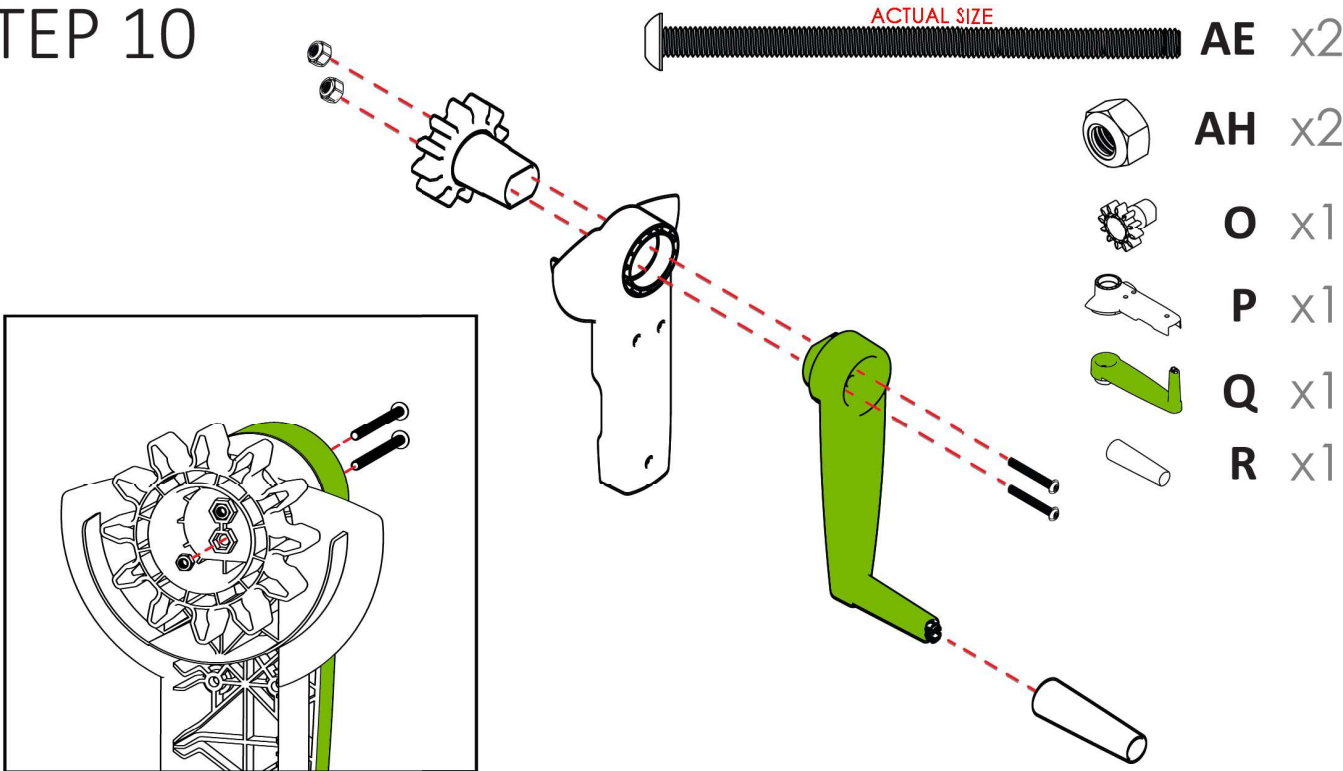
These 5 steps are taken from the full Maze Compost Tumbler instructions. They can be used while building the promo tumbler or after the tumbler has already been assembled.

For more information including full instructions and a link to an assembly video visit mazeproducts.com and go to the Maze Compost Tumbler 245L product page.

STEP 7 IF YOU HAVE ALREADY FULLY ASSEMBLED THE PROMO TUMBLER THEN PART D SHOULD ALREADY BE ATTACHED TO THE RIGHT SIDE OF THE TUMBLER.



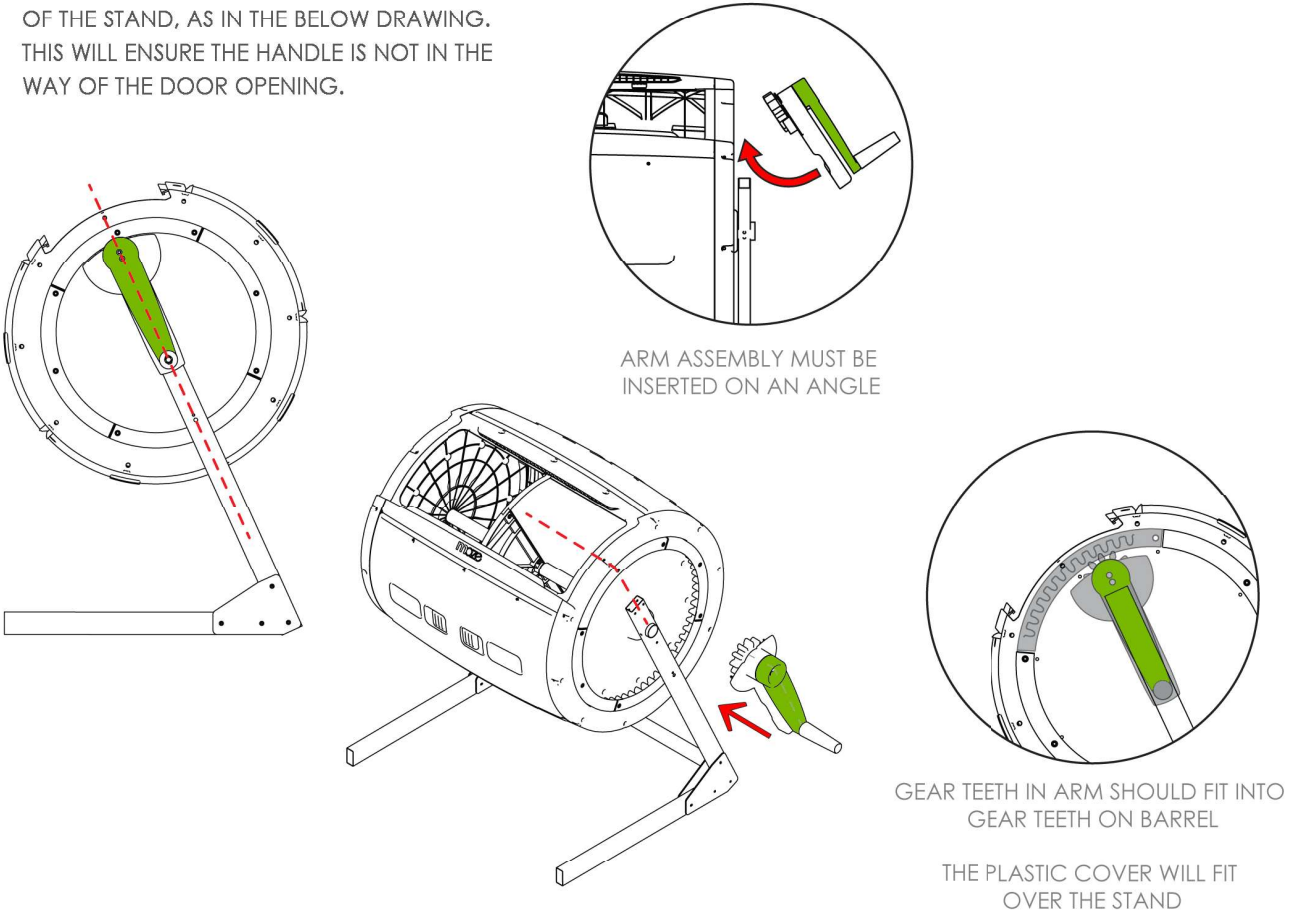
STEP 10



STEP 18

TIP: ALIGN THE DOOR OPENING WITH THE ANGLE OF THE STAND, AS IN THE BELOW DRAWING. THIS WILL ENSURE THE HANDLE IS NOT IN THE WAY OF THE DOOR OPENING.

AS ASSEMBLED IN STEP 10  x1



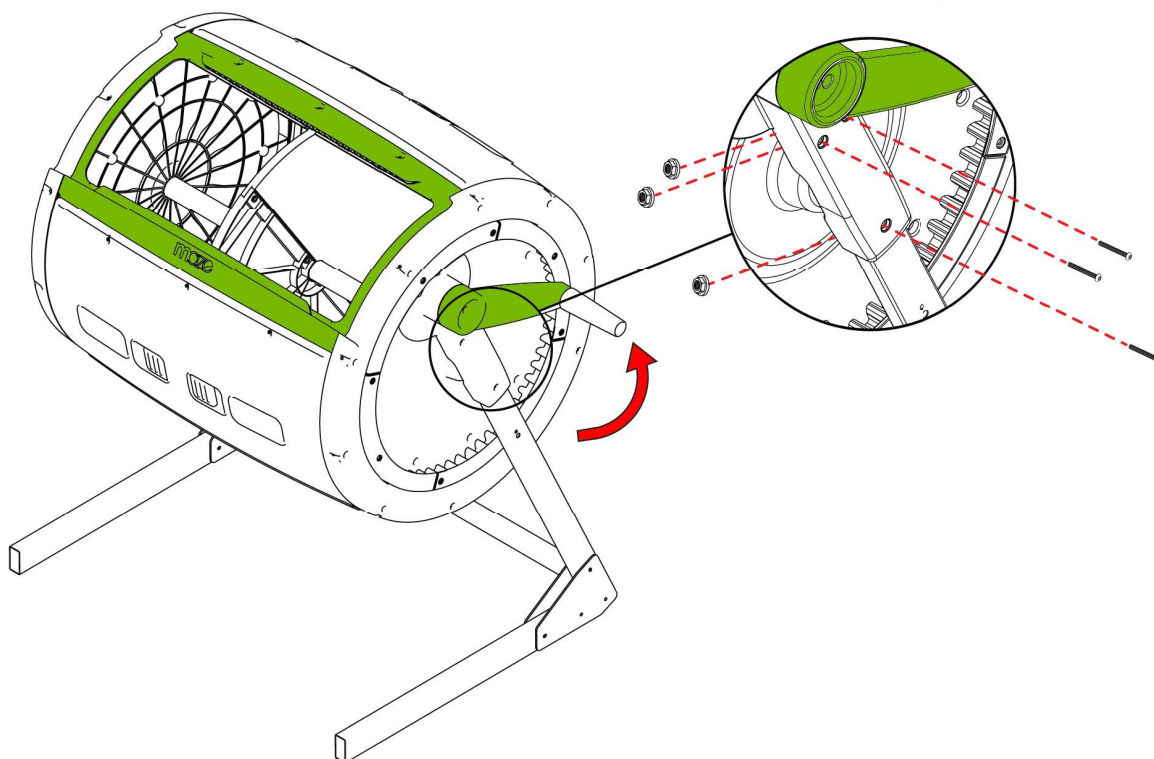
STEP 19

TIP: YOU SHOULD BE ABLE TO REACH THE NUTS (DIFFERENT ONES TO THE LAST STEPS) AND HOLD THEM IN POSITION UNTIL THEY REACH THE STAND AND WILL SELF TIGHTEN

AD x3

AG x3

TIP: MAKE SURE TO USE THE SELF CLINCHING NUTS



STEP 20

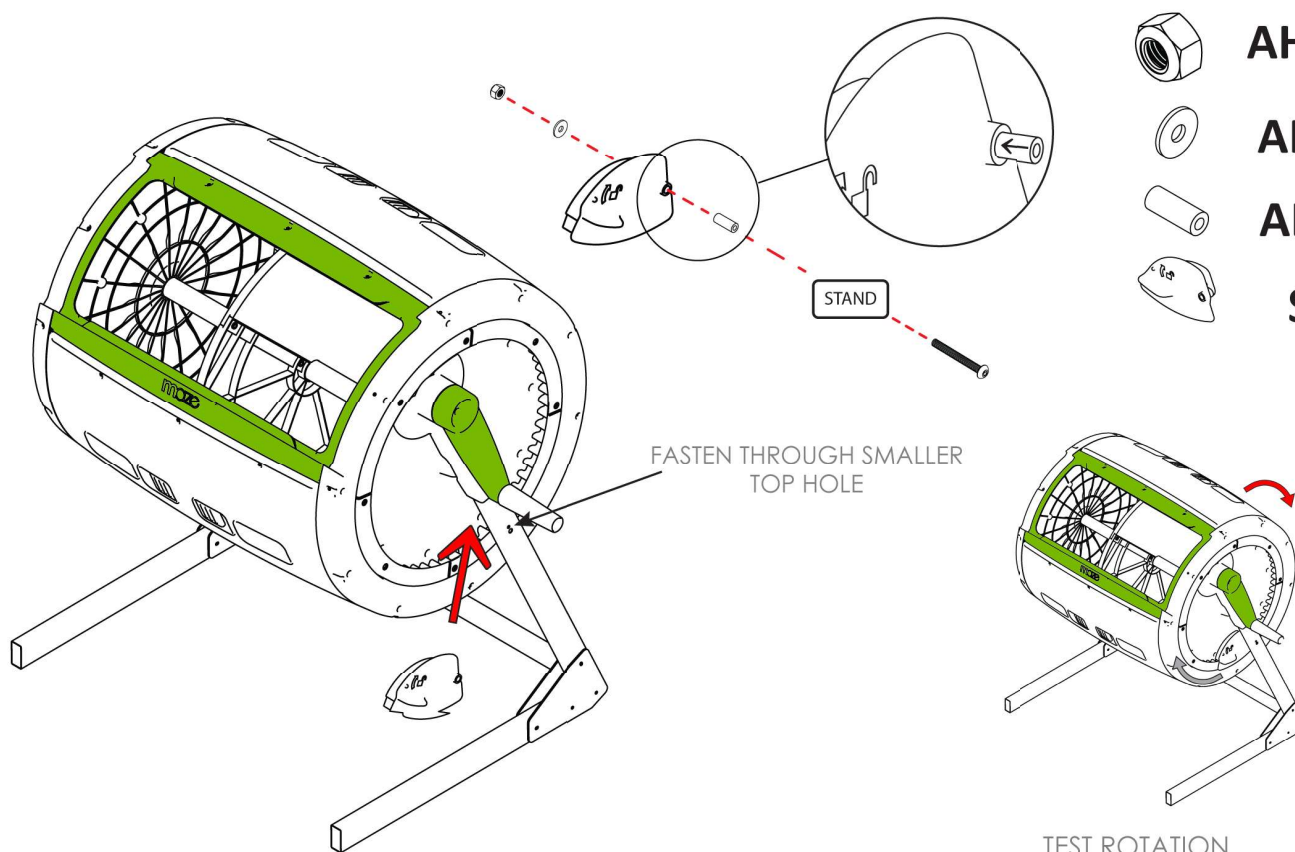
AD x1

AH x1

AF x1

AL x1

S x1



TEST ROTATION